



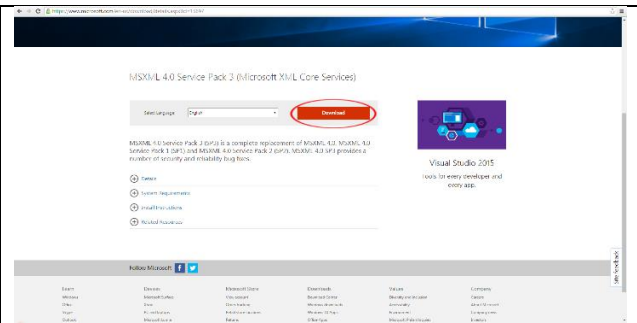
MISSISSIPPI STATE UNIVERSITY™
JAMES WORTH
BAGLEY
COLLEGE OF ENGINEERING

Mathcad Prerequisite Software Install

Hint: If the MSU VPN is not already installed and running, install and start the VPN client, using your net id and net password for authentication: <http://vpn.msstate.edu>.

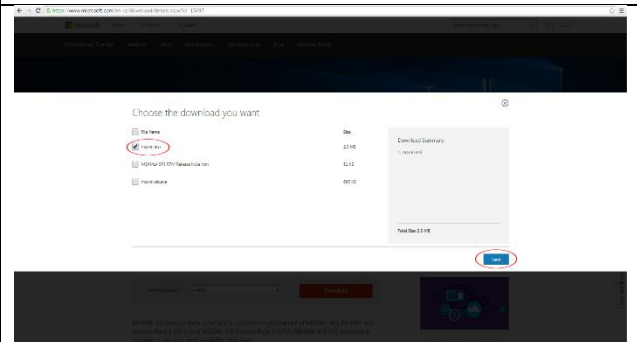
Step 1

- 1) Type in this link:
<https://www.microsoft.com/en-us/download/details.aspx?id=15697>
Or go to Google and search:
“MSXML 4.0 Service Pack 3” and open up the top result.
- 2) Click the download button.



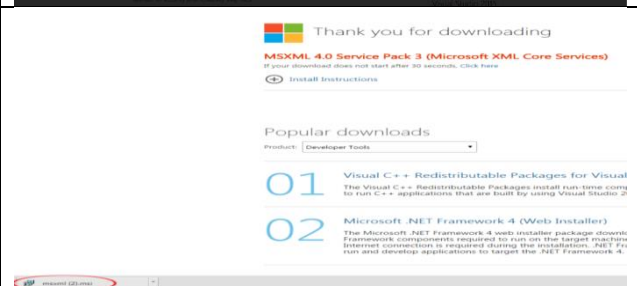
Step 2

- 1) A message will pop-up asking which files to download, select the checkbox next to “msxml.msi”.
- 2) Then click next in the bottom right of the message.



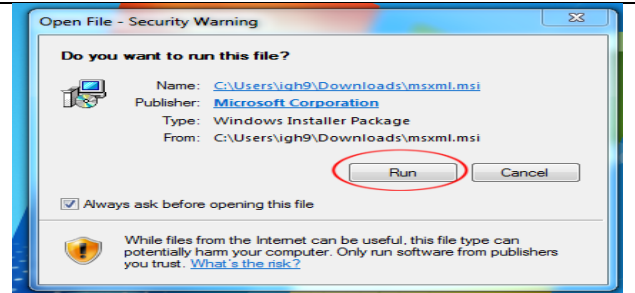
Step 3

- 1) Click the file that was downloaded.



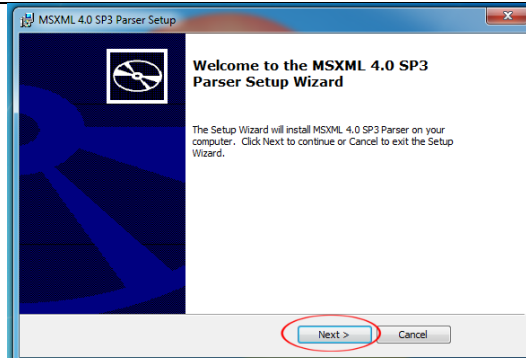
Step 4

- 1) A window will popup, click run.



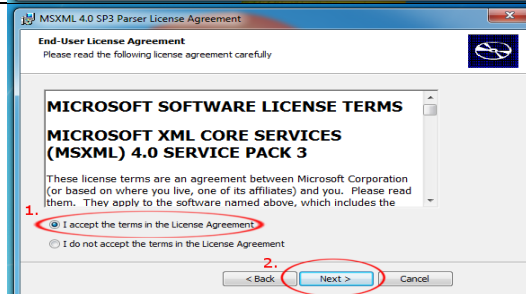
Step 5

- 1) On the installer window, click next.



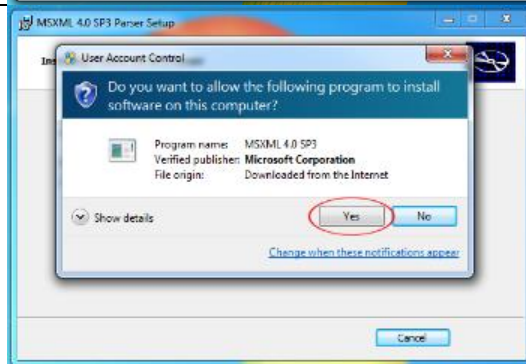
Step 6

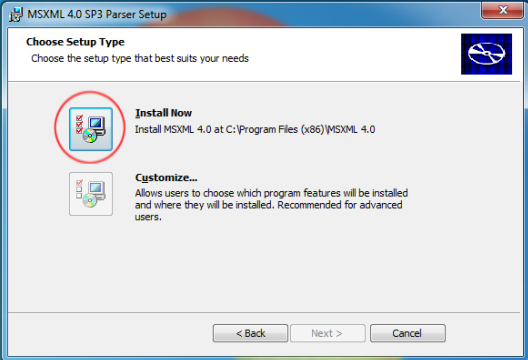
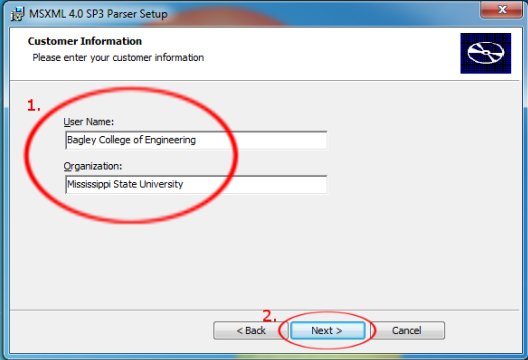
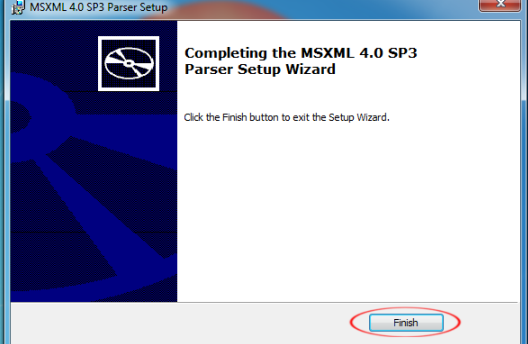
- 1) Read and Accept the Terms and Conditions.
- 2) Click Next.



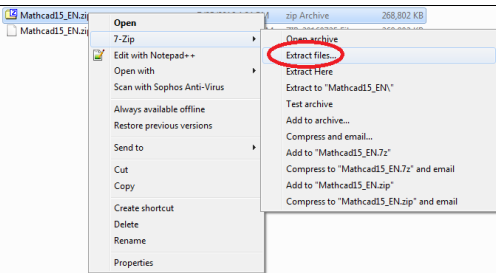
Step 7

- 1) Allow the program to make changes to the computer.



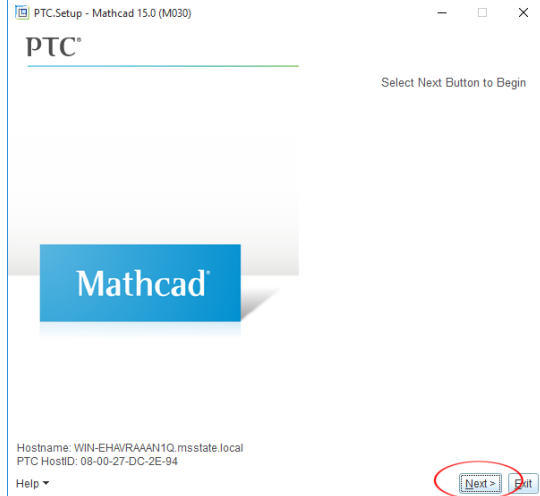
<p>Step 8</p> <p>2) Click "Install Now".</p>	
<p>Step 9</p> <p>1) Input your Username and Organization. 2) Click Next.</p>	
<p>Step 10</p> <p>1) Click Finish, and now the Prerequisite software is installed.</p>	

Installing Mathcad Version 15

<p>Step 1</p> <p>1) Uncompressed the installation archive and double-click setup.exe</p>	
--	--

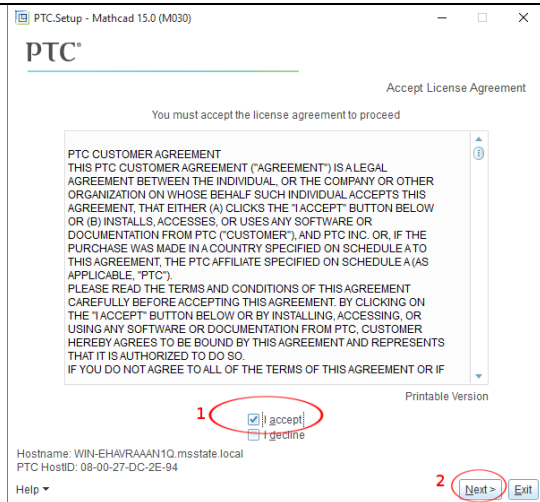
Step 2

- 1) Click **Next**.



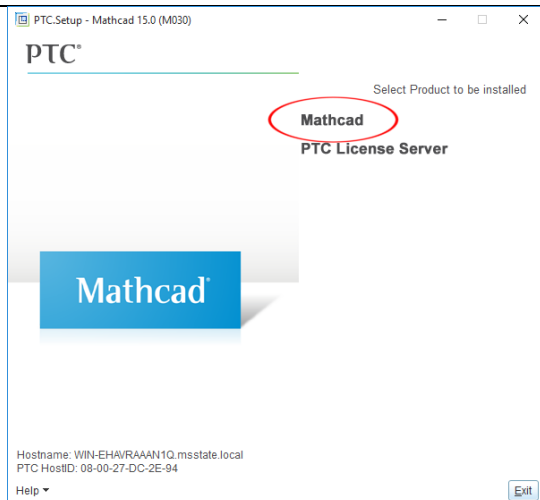
Step 3

- 1) Read the license agreement and select **"I accept"**.
- 2) Click **Next**.



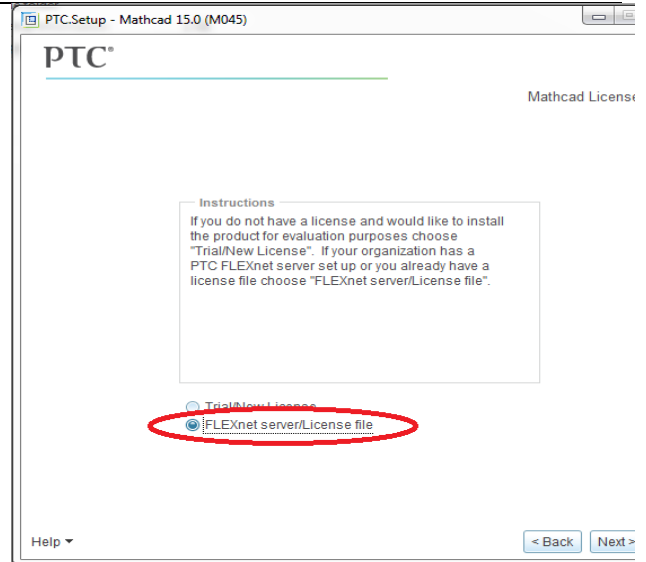
Step 4

- 1) Click **Mathcad**.



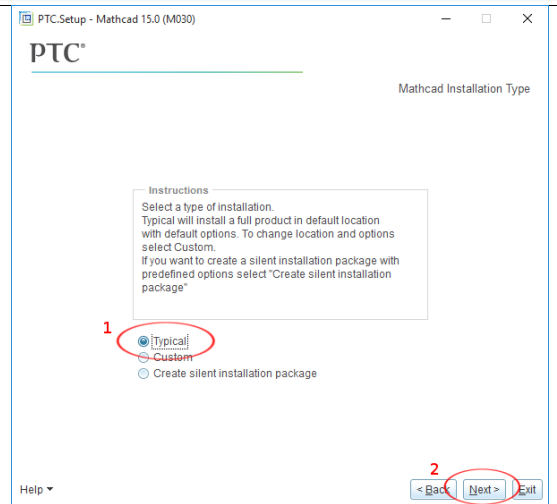
Step 5

- 1) Select **FLEXnet server/License file**.
- 2) Click **Next**.



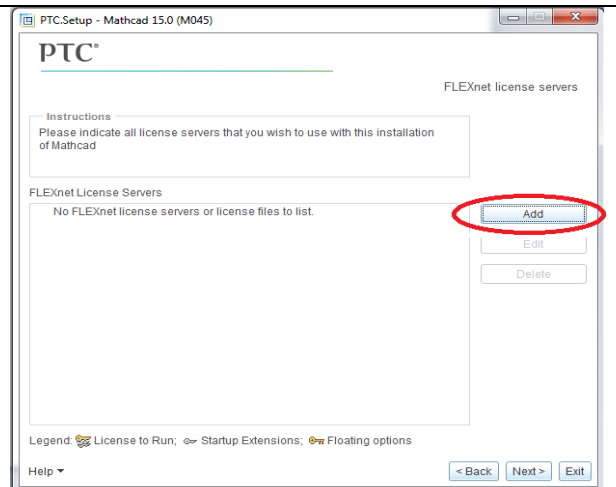
Step 6

- 1) Select **Typical**.
- 2) Click **Next**.



Step 7

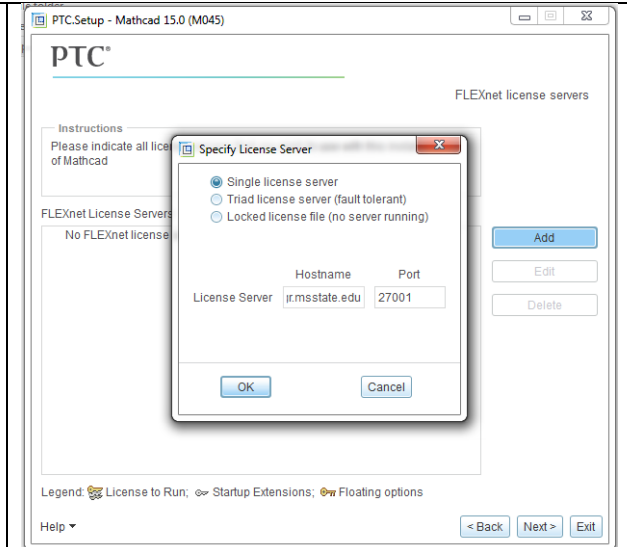
- 1) Click **Add**.



Step 8

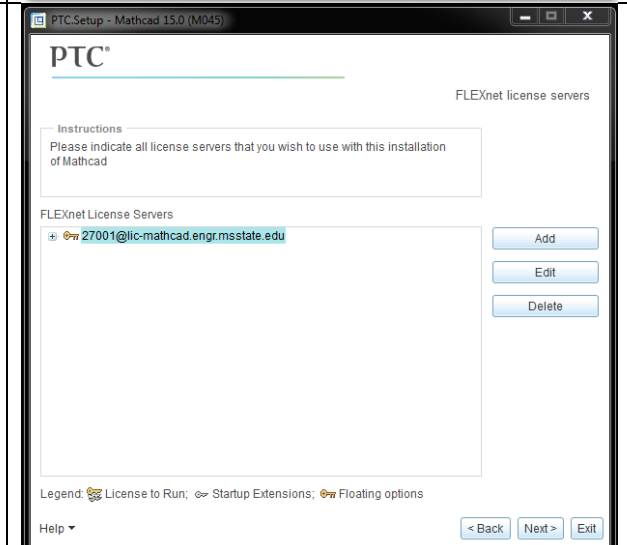
- 1) Select **Single License Server**.
Hostname: lic-mathcad.engr.msstate.edu
Port: 27001

Hint: If the MSU VPN is not already installed and running, install and start the VPN client, using your net id and net password for authentication: <http://vpn.msstate.edu>.



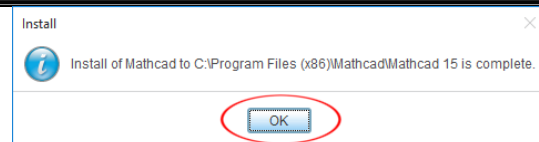
Step 8

- 1) Select the License.
- 2) Click **Next**.



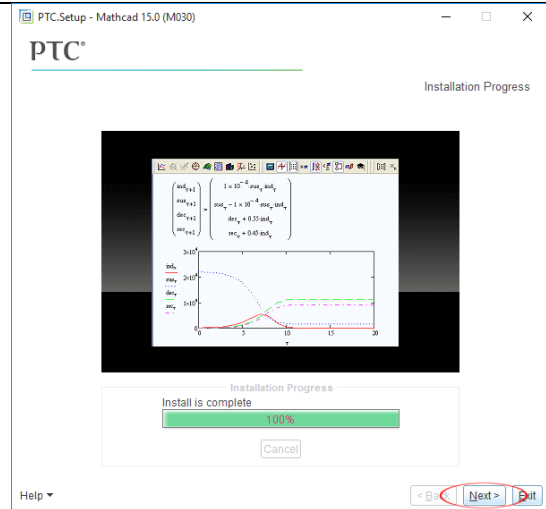
Step 9

- 1) When the software has completed the license configuration, click **OK**



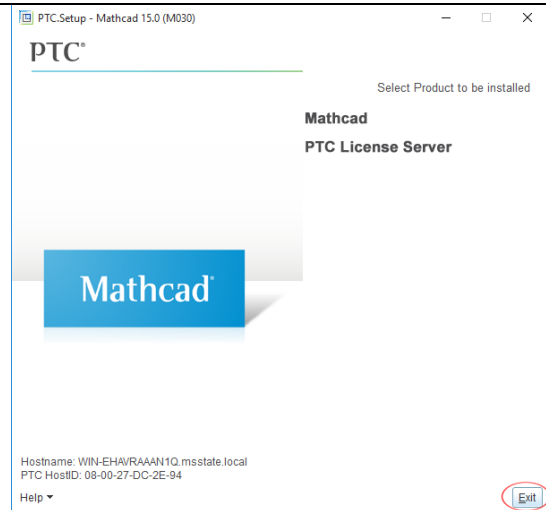
Step 10

- 1) At the main installation window, click **Next**



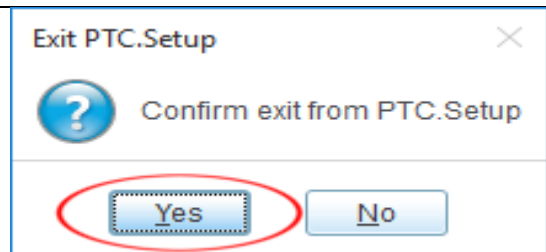
Step 11

- 1) Click **Exit**



Step 12

- 1) Acknowledge that you are exiting the software by clicking **Yes**



Contact Information:

Email: support@engr.msstate.edu